

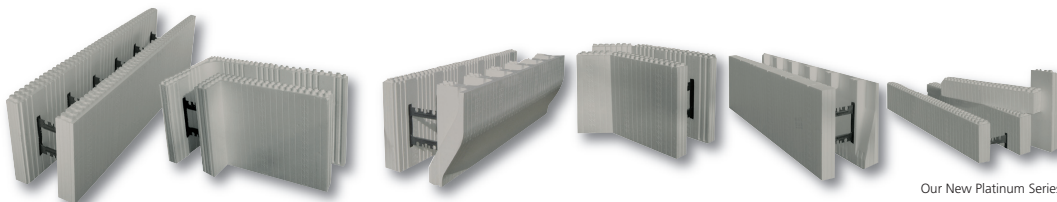


In the future buildings will sell energy, not buy it.

Are you ready?

LOGIX[®]
INSULATED CONCRETE FORMS

Good. Solid. **Green.**[™]



Our New Platinum Series

Construction Professional

What

What makes Logix “net-zero” ready?

The next wave of green buildings will be “net-zero” – buildings that sell energy back to the grid instead of buying it.

LOGIX is “net-zero” ready.

With a superior R-value of R-24 built into its DNA, LOGIX helps you create an airtight building envelope today for the quality of thermal performance that will be expected tomorrow.

Today’s super-efficient LOGIX buildings routinely cut energy bills in half and can achieve HERS Scores of less than 40, which means they are outperforming the existing building code by 60%.

Combined with cost-effective renewable energy generation, LOGIX is the solution to building commercially viable “net-zero” buildings in the future.

LOGIX is tomorrow’s smarter technology, today.

Environmental Impact of Buildings

- 71% of total electricity consumed
- 39% of total energy consumed
- 39% of total CO2 emissions produced
- 30% of total raw materials consumed
- 30% of total waste produced

Source: U.S. Green Building Council

“...the head of each agency shall... implement high-performance sustainable federal building design and construction beginning in 2020 and thereafter, ensuring that all new federal buildings that enter the planning process are designed to achieve zero-net-energy by 2030.”

– Executive order of the President of the United States, October 5, 2009.



Net-Zero Residence Built With LOGIX



Who

Who relies on LOGIX?



Commercial



Institutional



Multi-Unit



Municipal Buildings



Multi-Family



Industrial



Hospitality



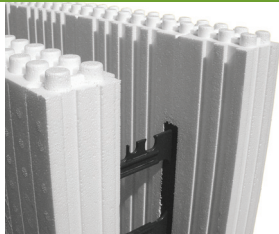
Entertainment Complexes

Where

Where performance leads to profit.

Only LOGIX offers a choice of web type, foam type, cavity thickness and panel thickness. With LOGIX, designers have more freedom to create. LOGIX is also the most solid and easiest ICF product to install, delivering more profit and less pressure to the construction team.

Thicker Foam



- Thick LOGIX panels provide superior R-24 R-Value and additional strength so you can build straight walls quickly. LOGIX panels also accept standard electrical boxes.

Cavity Widths from 4" - 12"



- Increases versatility and provides enhanced design flexibility.

Accessory Blocks



- Height adjusters (shown).
- End caps.
- 1/2 height blocks.
- Transition panels.
- LOGIX accessories reduce on-site labor.

Corner Web



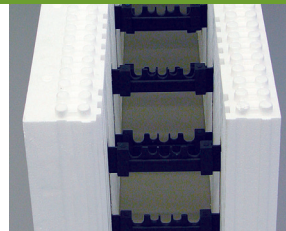
- Reinforced LOGIX corners reduce the risk of blow outs.
- Saves time by eliminating the need for additional form support in most instances.
- Provides additional fastening surface for interior and exterior finishes.
- Accommodates colonial corners.

Open Web Design



- Optimizes concrete flow and consolidation.

LOGIX XRV Panels



- Allows you to order LOGIX foam panels in thicknesses of up to 8". With this amazing technology, LOGIX can now provide customized R-Value solutions of up to R-66.

LOGIX Hybrid Technology



- LOGIX knockdown forms are fully compatible and interchangeable with LOGIX solid forms – and thus LOGIX Hybrid Technology is born. This integration of assembled, solid LOGIX blocks and LOGIX knockdown forms into a unique and harmonized building technology saves time and money on the job site.
- Use LOGIX knockdown blocks to build form units around complex and heavy rebar patterns. Then use solid LOGIX blocks to gain time in the areas where the rebar spec is lighter.
- When you've got heavy rebar, use LOGIX Hybrid Technology!

LOGIX Platinum Series



LOGIX Platinum Series is powered by millions of tiny graphite infrared absorbers and heat reflectors that reduce thermal conductivity.

- LOGIX Platinum Series provides more R-value without increasing wall thickness.
- LOGIX Platinum Series delivers R-27 with our regular 2.75" panel thickness.
- That's 23% more R-value than most ICF's offer.
- LOGIX Platinum Series is better for contractors as well. The elimination of the sun glare from regular white panels makes it easier on the eyes.



LOGIX walls provide six wall elements.

- Concrete.
- Reinforcement bar.
- Insulation.
- Air barrier.
- Vapor barrier.
- Furring strips.

This increases efficiency and reduces the number of vendors and trades that have to be managed and coordinated.



LOGIX is our ICF of choice because the entire system performs very well, is structurally sound and energy efficient.
 – Phil Dorn, P.Eng. – Samson Engineering Inc.



LOGIX Hybrid Technology allowed me to quickly build knockdown LOGIX blocks around pilaster rebar cages and then use time-saving solid LOGIX blocks for the rest of the structure. LOGIX is the most flexible ICF system I have used. I now build with LOGIX regularly and I have to say, my business actually grew in 2008!

– Jake Vierzen – R-Value Concrete Structures LLC



Jake Vierzen

How

How LOGIX takes care of every need.

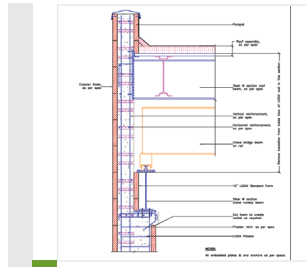
Where LOGIX really outshines is in our service and support. We're with you every step of the way, offering invaluable technical support and advice from design through to installation. Our talented nationwide technical support team features a line up of jobsite seasoned technical representatives, a LEED AP and a CDT certified professional engineer.



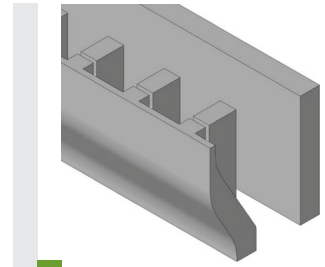
Locally deployed technical support staff



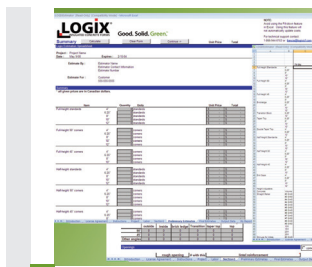
Installer training courses



Details and design guidelines



BIM 3D Object Library



Estimating and costing software



Manuals and DVDs



Over 400 local stocking distributors and multiple manufacturing facilities across North America

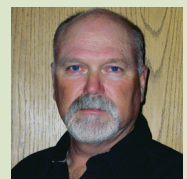


Regular & highwall bracing solutions

Thousands of builders have taken LOGIX training programs and are available to provide competitive bids. LOGIX AIA continuing education courses can be delivered at your offices or on-line. For more details and for more information, visit logixicf.com.

I've specialized in church construction since 1977. My first LOGIX project was the New Hope Church. We started in late August and were closed in by winter. During the winter the construction, crews completed the 26,000 square foot church interior which was heated to a comfortable 55 degrees by a single propane space heater which, due to the exceptional thermal performance of the LOGIX walls, only had to run some of the time. The project came in on-budget and 3 months ahead of schedule. During the opening ceremony there were two standing ovations for everyone involved in the project. Needless to say, my first LOGIX project was a complete success.

– Verny Lehrman – Lehrman Construction, Inc.



Verny Lehrman

Why

Why LOGIX is superior.

Superior, High Impact Green Technology

With a single spec, LOGIX can contribute up to 31 LEED-NC points, including all 19 points under "Energy and Atmosphere Credit 1".

Superior Energy Savings

The combination of the LOGIX continuous foam insulation and the thermal mass properties of insulated concrete provide a high thermal resistance wall system that reduces the peak heating and cooling loads of the building. The LOGIX thermal envelope produces an airtight structure and dramatically reduces air leakage, energy use and HVAC requirements.

Superior Health Quality

LOGIX walls will not promote the growth of mold or mildew. In addition, airtight LOGIX buildings make it easier to control and monitor airflow and contaminants. The end result is a healthier, more comfortable environment for the building's occupants.

Superior Durability

In the last 30 years, the growth of insurance losses has outstripped the growth of GDP by ten times. LOGIX walls are designed to withstand the harshest conditions imposed by water, wind and fire.

Superior Sustainability

LOGIX contributes to the protection of our natural resources by using less wood for the construction of buildings.

Superior Recycling and Re-Use

Up to 50% of LOGIX blocks, by weight, are made from recycled materials. LOGIX produces minimal waste. Any waste can be fully recycled.

Superior Protection

LOGIX walls have superior fire and sound attenuation ratings. A 6.25" LOGIX wall meets a 4-hour fire rating and has achieved an STC rating of up to 56.

Superior Profits

A recently completed industry study compared green buildings to regular buildings and found that green buildings deliver the following financial benefits:

- 13.2% lower operating costs
- 6.4% higher occupancy
- 6.2% higher rent
- 10.9% higher building values

- *McGraw-Hill Construction*

The positive effect of green buildings on employee productivity must also be considered. The improved indoor air quality, additional comfort and reduced level of noise and distractions of green buildings will enhance employee productivity. Even a small percentage increase in productivity would represent a huge financial benefit to most businesses.

Sustainable building has been our commitment to every customer since we opened in 1983. Using data collected by our firm and the local energy utilities, we've established that holistically designed ICF buildings typically consume 40-50% less energy when compared to similar conventionally-built buildings. This summer we used LOGIX in a community library project that we have registered for LEED certification. We expect this building to achieve a LEED-NC Gold rating.

- Nathan Gillette, Architect, LEED AP – Bazzani Associates

We chose to build with LOGIX for many reasons – energy efficiency, added sound proofing, flexibility of design. But mostly we wanted to construct a building that would showcase concrete construction and allow us to work in a building that really met our needs. After working in our head office for a year, the benefits of building with LOGIX are clear to us – we are not interrupted by the noise from our maintenance shop or truck traffic in our aggregates pit, and the large windows throughout the building allow us to view the nature and wildlife that surround our property.

As a ready-mixed concrete supplier, we already knew the many benefits that come from building with concrete and ICF. However, it wasn't until we ourselves built with LOGIX that we could truly feel the benefits.

- Robert Fast, President – Cardinal Concrete Ltd.



Nathan Gillette



Robert Fast

LOGIX ICF walls are tried, tested and approved for superior performance.

- LOGIX is approved by all major national code approval organizations. For a complete list of local and national code approvals, please visit the LOGIX website at logixicf.com
- Meets a 4-hour fire rating, and 15-minute “stay-in-place” Fire Test in accordance with ASTM E119 and CAN/ULC S101; also meets 4-hour fire rating as per the National Building Code and International Building Code.
- Flame Spread less than 25 and Smoke Development less than 450 when tested in accordance with ASTM E84, UL 723, UBC 8-1.
- Sound Transmission Classification testing in accordance with ASTM E90. LOGIX achieved STC 50 & 56 for a 4" LOGIX wall (1/2" drywall & 2x2 wood strips on one side, 1/2" drywall on the other side) and 6.25". LOGIX wall (2 layers of 5/8" drywall & 2x2 wood strips on one side, 1/2" drywall on the other side), respectively.
- Meets requirements of ASTM C578 “Standard Specification for Rigid, Cellular Polystyrene Thermal Insulation” as a Type II Thermal Insulation Material.
- Polypropylene web material meets CC1 Requirements for plastic materials when tested in accordance with ASTM D1929, D635, and D2843.
- Fastener Withdrawal and Lateral Resistance in accordance with ASTM D1761.
- Thermal Resistance (R-Value) in accordance with ASHRAE Fundamentals Handbook 2001.
- Room Fire Test Standard for Interior of Foam Plastic Systems in accordance with UBC 26-3.



Good. Solid. Green.™

For more information,
call toll-free 1.888.415.6449
or visit logixicf.com

151 Paramount Road
Winnipeg, MB
Canada R2X 2W6
1.877.442.4465

54 1st St. NW
P.O. Box 373
Pelican Rapids, MN
USA 56572
1.877.823.0625

7-26318-TWP RD
531A
Acheson, AB
Canada T7X 5A3
1.888.453.5961

P.O. Box 16923
Wichita, KS
USA 67216
1.888.838.5038

#215-6333 Unsworth Rd.
Chilliwack, BC
Canada V2R 5M3
1.888.453.5961

106 Perma “R” Rd.
Johnson City, TN
USA 37604
1.800.251.7532

6829 Dale Rd
Port Hope, ON
Canada L1A 3W3
1.888.706.7709

31381 Pond Rd.
Building #2
McFarland, CA
USA 93250
1.888.453.5961

* Energy Star for insulation is currently available only in the United States, and applies to residential construction only.