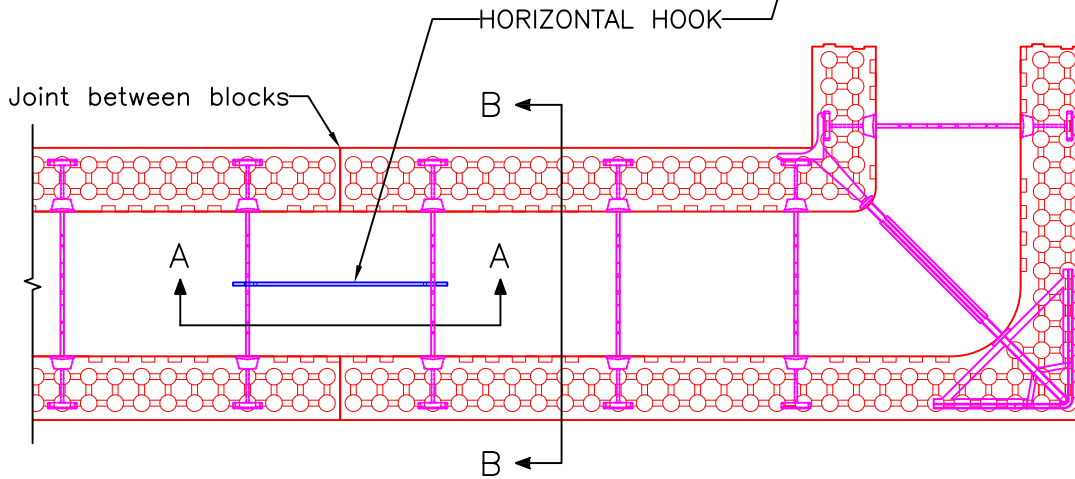
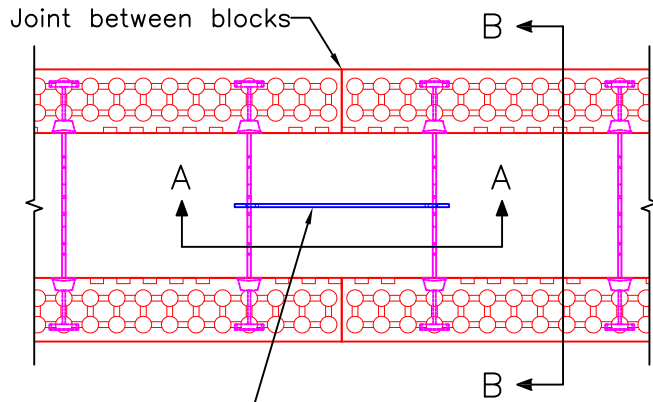


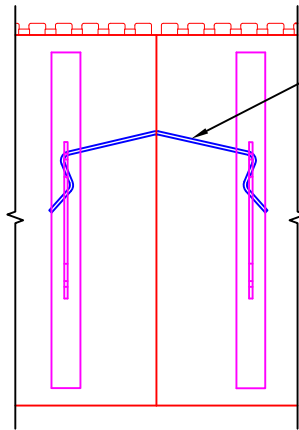
HORIZONTAL HOOK CONNECTING
STANDARD TO STANDARD
FORMS – PLAN VIEW

(Applicable for all LOGIX Standard Form sizes)

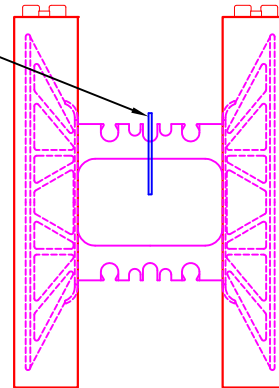


HORIZONTAL HOOK CONNECTING STANDARD
TO CORNER FORMS – PLAN VIEW

(see Notes)



SECTION A-A



SECTION B-B

NOTES:

1. Applicable for connecting 4" or 6.25" LOGIX Standard Forms to 4" or 6.25" LOGIX Corner Forms.
2. Use traditional zip ties when connecting the shorter legs of the 8", 10" or 12" LOGIX Corner Forms to LOGIX Standard Forms.
3. When connecting the shorter leg of the 4" LOGIX Corner Form be sure to connect the Horizontal Hook at the web's center rebar slot.



The drawing represented herein is to be used as a reference guide only; the user shall check to ensure the drawing meets local building codes and construction practices by consulting local building officials and professionals, including any additional requirements. Logix reserves the right to make changes to the drawing without notice and assumes no liability in connection with the use of the drawing including modification, copying or distribution.

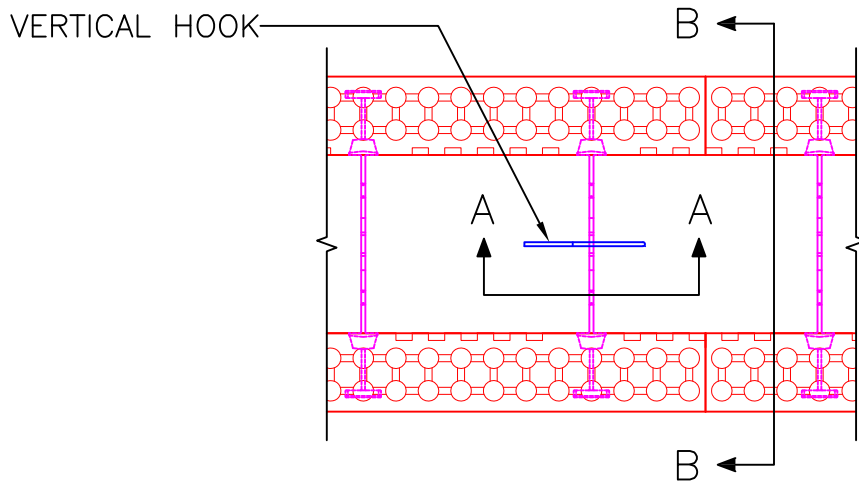
Drawing:
5.1.20_HOOK-Rev.

Date:
May 05/09

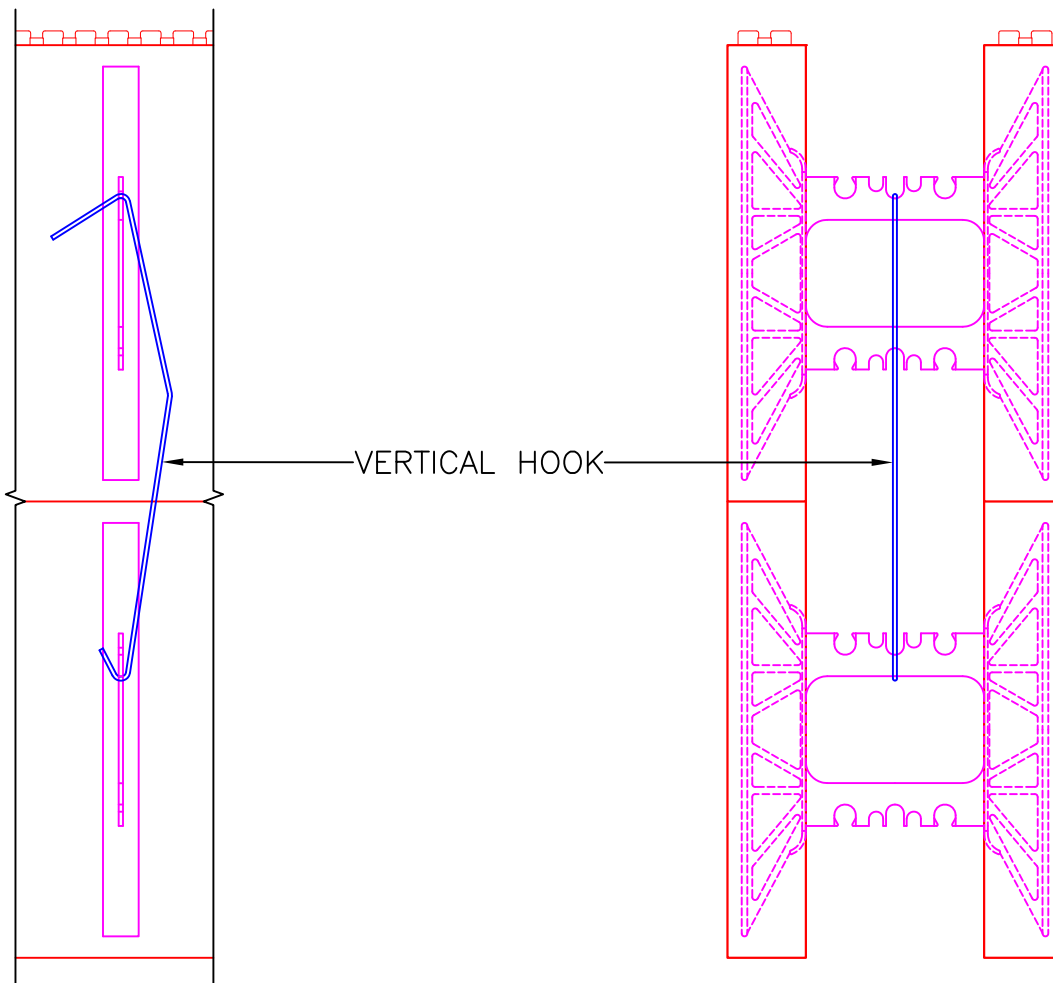
1/2

Title:

STEEL HORIZONTAL HOOK



VERTICAL HOOK CONNECTING COURSES – PLAN VIEW



SECTION A-A

SECTION B-B